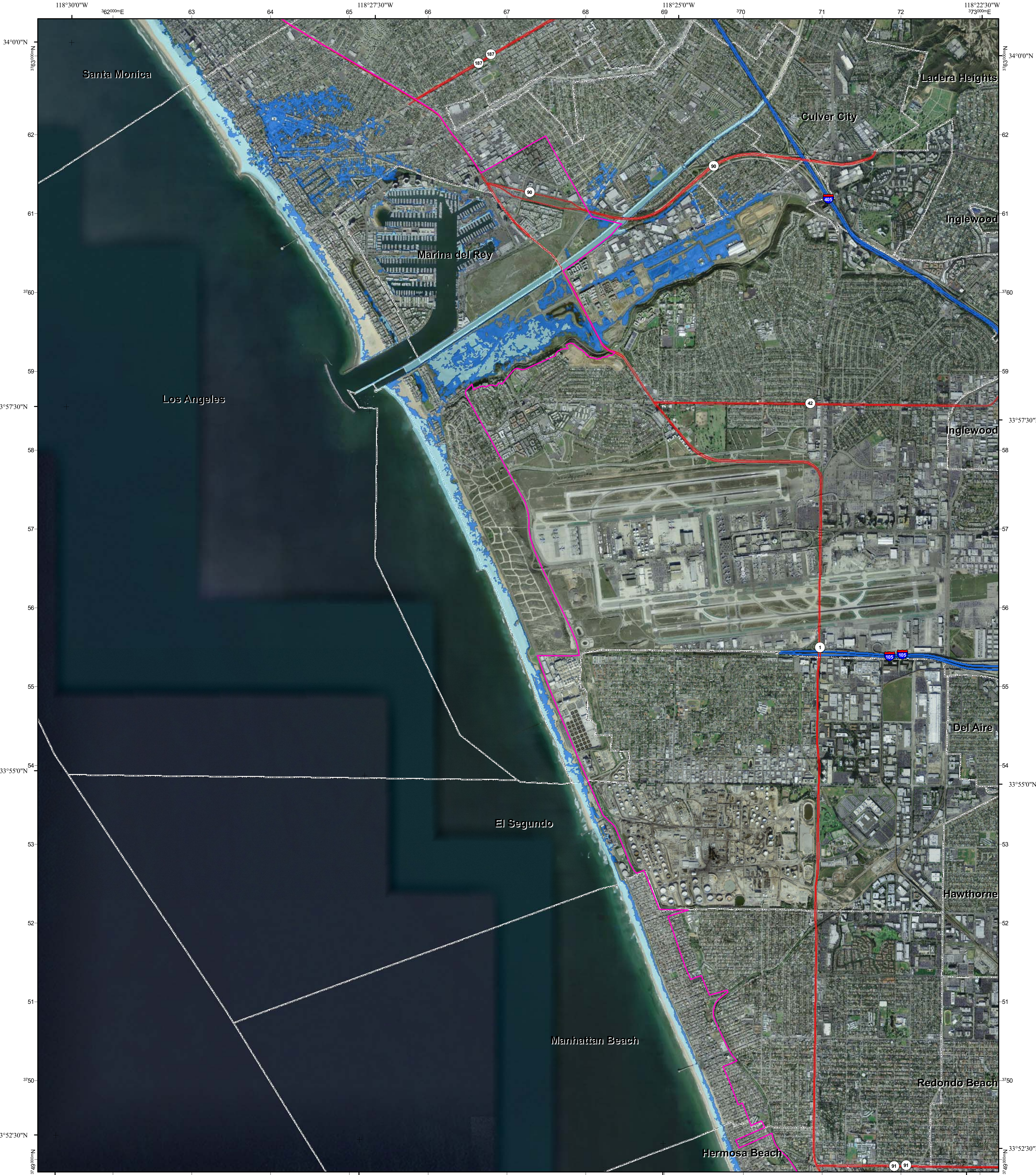
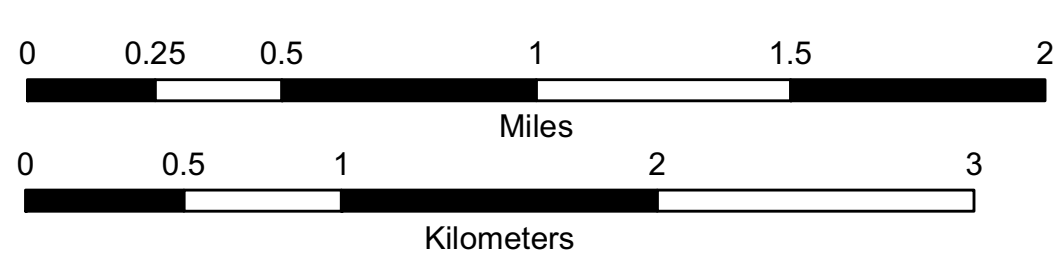


# California Flood Risk: Sea Level Rise Venice Quadrangle



- Interstate
- US Highway
- State Highway
- County Highway
- Current Coastal Base Flood (approximate 100-year flood extent)
- Sea Level Rise Scenario Coastal Base Flood + 1.4 meters (55 inches)
- Landward Limit of Erosion High Hazard Zone in 2100
- Coastal Zone Boundary



Created by the Pacific Institute, Oakland, California, 2009.  
Project funded by the California Energy Commission's Public Interest Energy Research Program, CalTrans, and the California Ocean Protection Council



Adjoining Quadrangles:

1	2	3
4		5
6	7	8

- 1: Topanga
- 2: Beverly Hills
- 3: not printed
- 4: not printed
- 5: not printed
- 6: not printed
- 7: Redondo Beach
- 8: Torrance



This information is being made available for informational purposes only. Users of this information agree by their use to hold blameless the State of California, and its respective officers, employees, agents, contractors, and subcontractors for any liability associated with its use in any form. This work shall not be used to assess actual coastal hazards, insurance requirements, or property values and specifically shall not be used in lieu of Flood Insurance Studies and Flood Insurance Rate Maps issued by the Federal Emergency Management Agency (FEMA).

Data Sources: US Geological Survey, Department of Commerce (DOC), National Oceanic and Atmospheric Administration (NOAA), National Ocean Service (NOS), Coastal ServicesCenter (CSC), Scripps Institution of Oceanography, Phillip Williams and Associates, Inc. (PWA), US Department of Agriculture (USDA), California Coastal Commission, and National Aeronautics and Space Administration (NASA). Imagery from ESRI and i-cubed.

Map extents match USGS 7.5 minute topographic maps