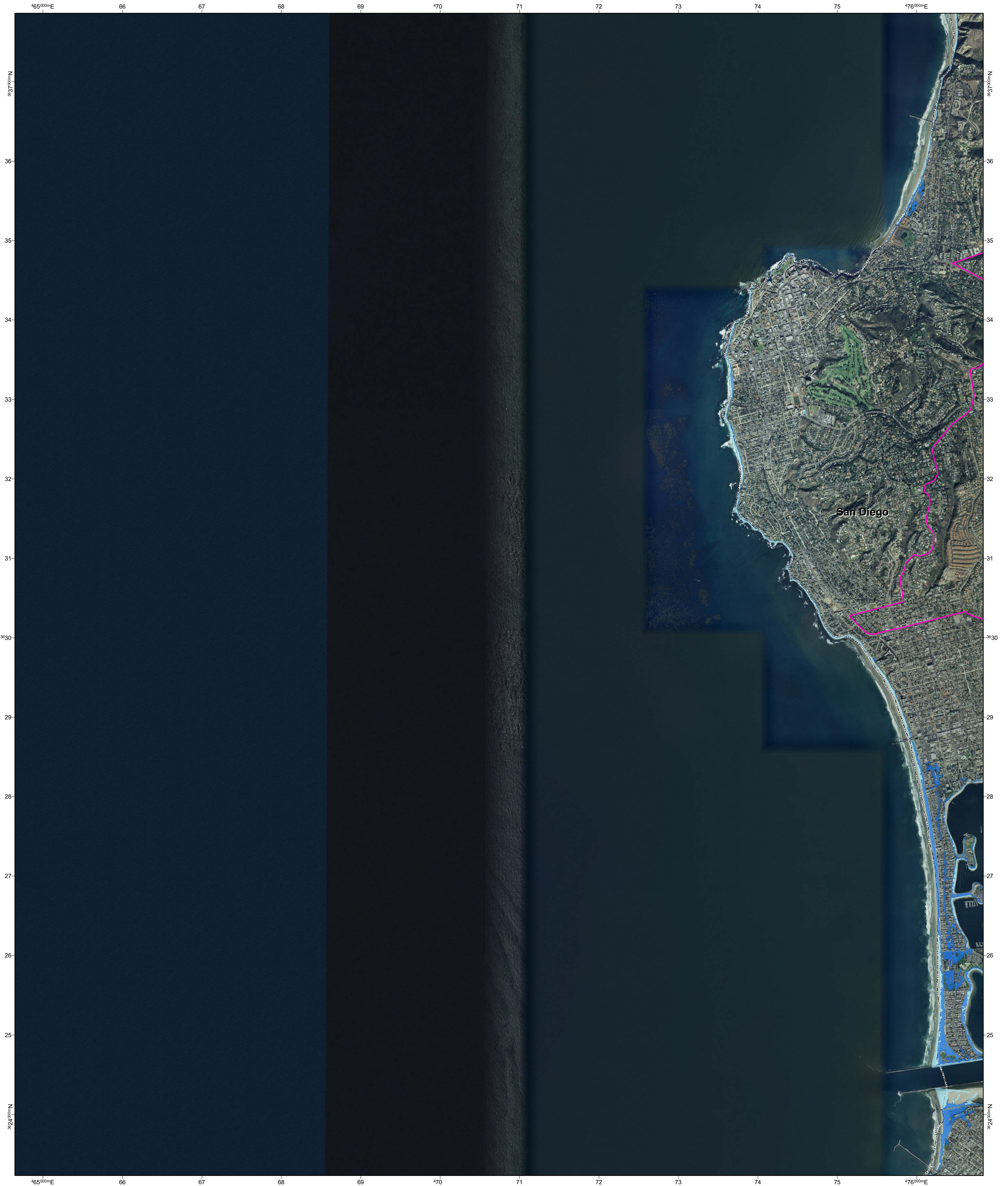



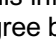



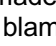
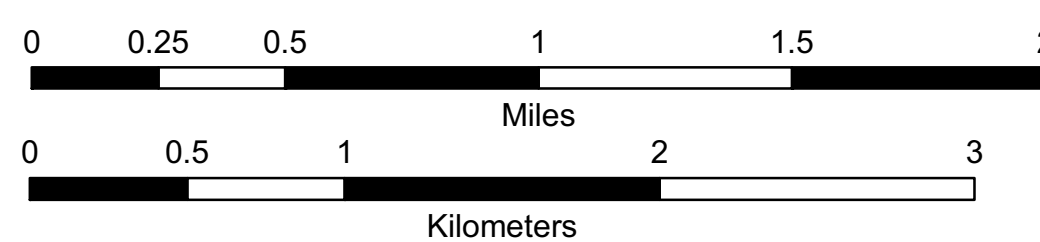


California Flood Risk: Sea Level Rise

La Jolla OE W Quadrangle



-  Interstate
-  US Highway
-  State Highway
-  County Highway
-  Current Coastal Base Flood (approximate 100-year flood extent)
-  Sea Level Rise Scenario Coastal Base Flood + 1.4 meters (55 inches)
-  Landward Limit of Erosion High Hazard Zone in 2100
-  Coastal Zone Boundary



Created by the Pacific Institute, Oakland, California, 2009.
 Project funded by the California Energy Commission's Public Interest Energy Research Program, CalTrans, and the California Ocean Protection Council

Grid coordinates:
 UTM Zone 11N meters
 NAD83 GCS degrees

Adjoining Quadrangles:

1	2	3	1: <i>not printed</i>
4	5	6	2: Del Mar OE W
7	8	3: Del Mar	4: <i>not printed</i>
			5: La Jolla
			6: <i>not printed</i>
			7: Point Loma OE W
			8: Point Loma



Map extents match USGS 7.5 minute topographic maps

Data Sources: US Geological Survey, Department of Commerce (DOC), National Oceanic and Atmospheric Administration (NOAA), National Ocean Service (NOS), Coastal Services Center (CSC), Scripps Institution of Oceanography, Philip Williams and Associates, Inc. (PWA), US Department of Agriculture (USDA), California Coastal Commission, and National Aeronautics and Space Administration (NASA). Imagery from ESRI and i-cubed.

