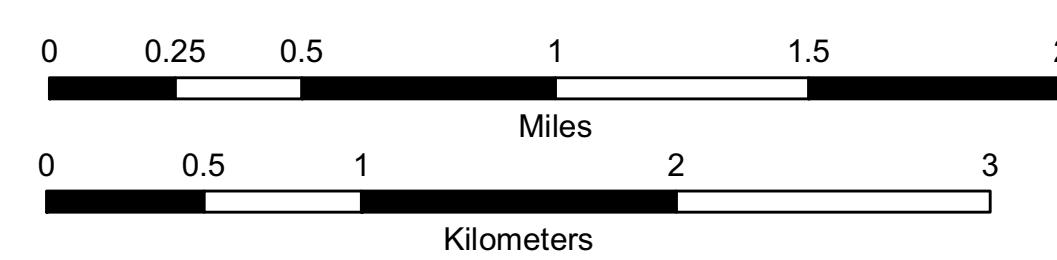
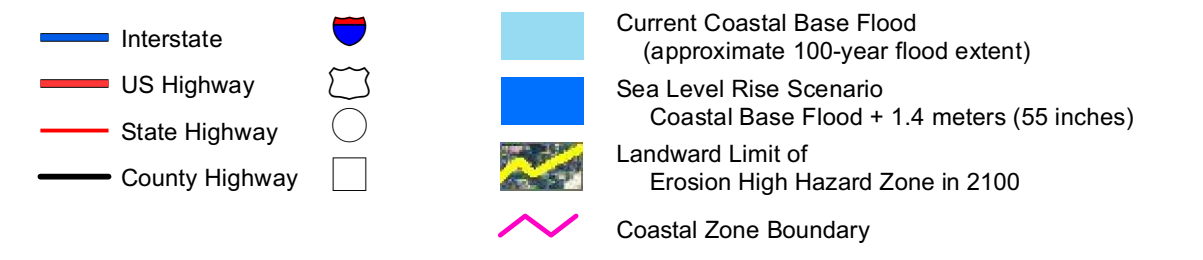
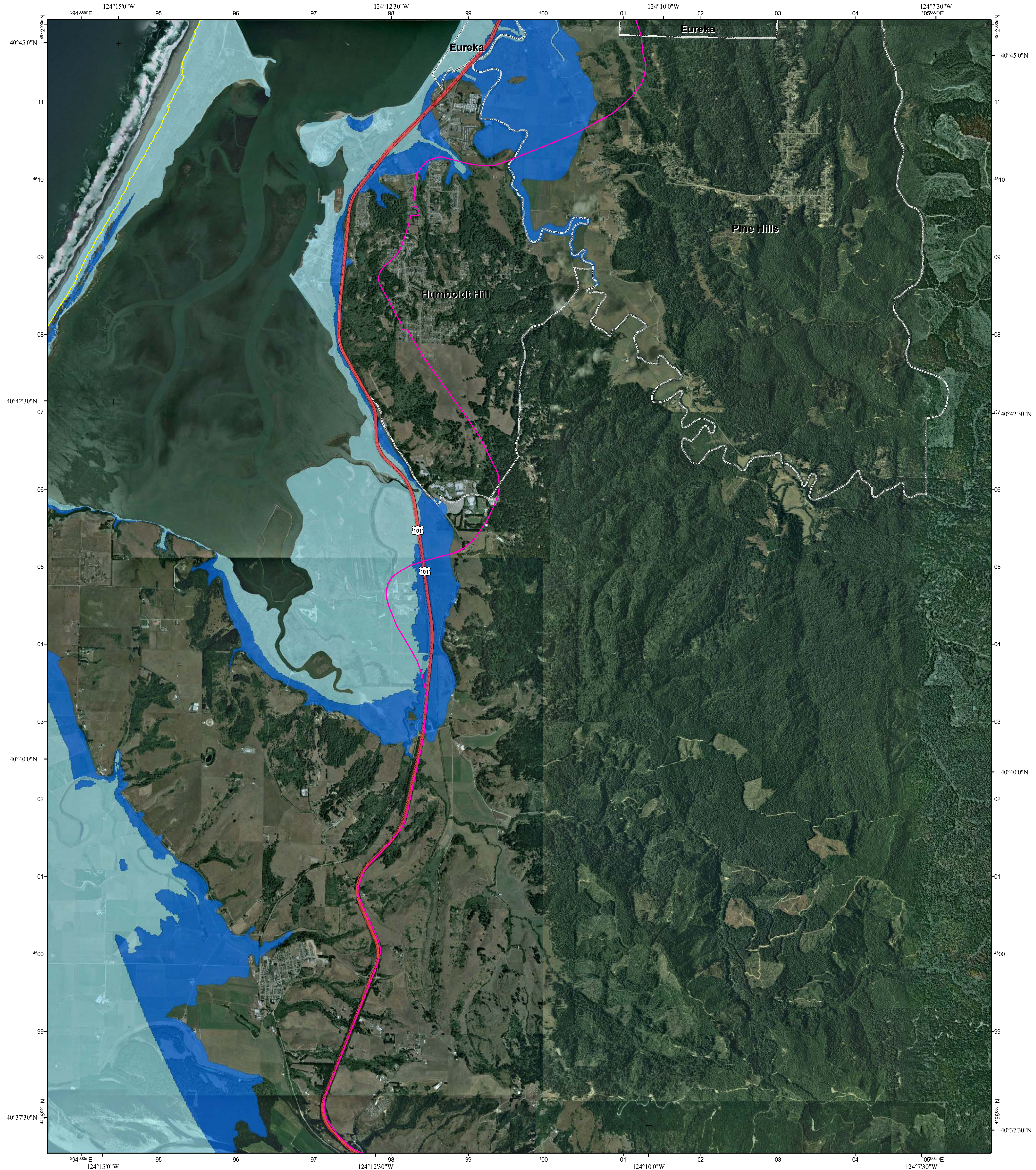


California Flood Risk: Sea Level Rise Fields Landing Quadrangle



Adjoining Quadrangles:

| | | | |
|---|---|---|--------------------|
| 1 | 2 | 3 | 1: not printed |
| 4 | 5 | 6 | 2: Eureka |
| 6 | 7 | 8 | 3: Arcata South |
| | | | 4: Cannibal Island |
| | | | 5: not printed |
| | | | 6: Ferndale |
| | | | 7: Fortuna |
| | | | 8: not printed |



This information is being made available for informational purposes only. Users of this information agree by their use to hold blameless the State of California, and its respective officers, employees, agents, contractors, and subcontractors for any liability associated with its use in any form. This work shall not be used to assess actual coastal hazards, insurance requirements, or property values and specifically shall not be used in lieu of Flood Insurance Studies and Flood Insurance Rate Maps issued by the Federal Emergency Management Agency (FEMA).

Created by the Pacific Institute, Oakland, California, 2009.
Project funded by the California Energy Commission's Public Interest Energy Research Program, CalTrans, and the California Ocean Protection Council

Grid coordinates:
UTM Zone 10N meters
NAD83 GCS degrees

Data Sources: US Geological Survey, Department of Commerce (DOC), National Oceanic and Atmospheric Administration (NOAA), National Ocean Service (NOS), Coastal Services Center (CSC), Scripps Institution of Oceanography, Philip Williams and Associates, Inc. (PWA), US Department of Agriculture (USDA), California Coastal Commission, and National Aeronautics and Space Administration (NASA). Imagery from ESRI and i-cubed.



Map extents match USGS 7.5 minute topographic maps