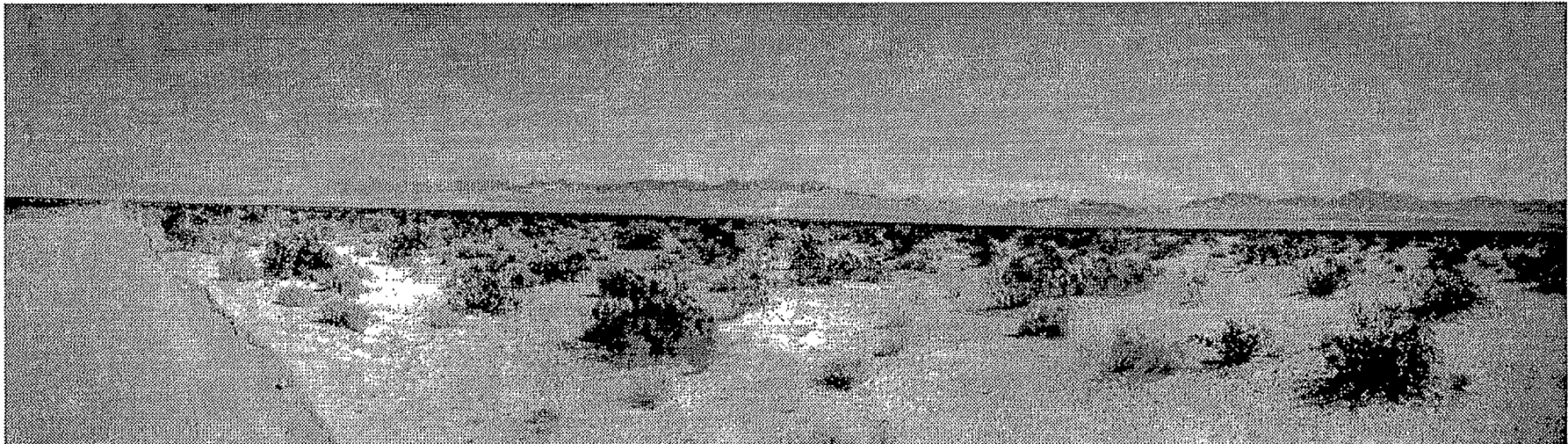


4. From the southeast boundary of Cadiz Dunes Wilderness Area looking southeast across the water conveyance facility alignment to the Kilbeck Hills.



5. From two miles east of the Sheephole Valley Wilderness Area boundary looking northeast. The water conveyance facility alignment is between Cadiz Dry Lake and the Kilbeck Hills.

Figure 5.14-4

Cadiz Groundwater Storage & Dry-Year Supply Program

Final EIR/EIS



6. From the proposed substation looking north along the water conveyance facility alignment.

Figure 5.14-4

Cadiz Groundwater Storage & Dry-Year Supply Program

Final EIR/EIS